



CAPABILITY STATEMENT

EMPOWERMENT THROUGH ECONOMIC INDEPENDENCE

RAWCIVILCONSTRUCTION.COM.AU





MANAGING DIRECTOR/FOUNDER SUMMARY

As an Aboriginal man who has been involved in the education, training and employment arenas for all of my working life, I have a commitment to supporting my People to achieve equality in the workplace.

At the heart of moving forward and achieving employment equality is meaningful and respectful engagement. Partnerships are critical to realising these aspirations.

The key to the success in building stronger Aboriginal workforce participation is an ongoing focus on addressing all dimensions that impact on a person's working life, that is, a holistic approach that understands the complex inter-relatedness of broader life issues and their resulting impact on an individual's workforce development. This approach underpins all work undertaken by my company.

Ultimately, to address Aboriginal workforce development challenges, workforce development approaches need to be focussed on developing complementary supply side measures that aim to connect the Aboriginal workforce to industry demand, using methodologies that include:

- driving shifts about the qualitative perception of the Aboriginal workforce. In short, it means working with employers to see the value of 'employing Aboriginals'. This must not be done in isolation but in partnership with industry, enterprise and government.

Fundamentally by addressing the workforce development challenges facing Aboriginal Australians, we go a long way towards creating an environment for industry and employers to work with a responsive and competitive workforce where Aboriginal people participating in the workplace becomes the norm rather than the exception.

Allan Jones
Managing Director

CIVIL CONSTRUCTION

OUR TEAM'S PROVEN DELIVERY WITHIN TIER 1 AND 2 PROJECT GOVERNANCE HAS BEEN THE BASIS IN WHICH RAW CIVIL CONSTRUCTION HAS PROVIDED ITS SELF PERFORMING OUTCOMES TO DATE.

Dedicated project managers, together with proven operational field supervisors, has provided RAW Civil Construction with the opportunities to grow Aboriginal operators, leading hands, skilled labourers and expand its labour force to include 5 civil apprentices.

RAW Group's physical and cultural safety-first approach enhances our peoples' opportunities to grow in an environment that replicates care, compassion and empathy, whilst upholding corporate governance, direction and values.

**PROJECT CAPABILITIES FOR
CIVIL CONSTRUCTION FROM
\$15M-\$20M**

OUR SERVICES:



Bulk Earthworks: Bulk excavations, road embankment construction, retention and drainage basins, stop and levy banks.



Detailed Earthworks: Batters, swale construction, building pads, abutment fills, rock pitching and protection.



Concrete Works: Concrete pavements, building slabs, footpaths, retaining walls and stairs.



Stormwater: Concrete pits, box culvert, pipe installation and PVC installs.



Conduit Installation: Pit and pipe for electrical services and street lighting.



Rooding and Pavements: Box out and installation of unbound and flexible pavements, road widenings and shoulder construction.



Pavements: Asphalt, spray seal, concrete, heavy duty and block paving.



Hard Landscaping: Street furniture, line marking, signage, timber boardwalks, water features and lighting.



Wet & Dry Equipment Hire: Equipment for hire such as watercarts, tippers, excavators, augers, graders, pad foot roller and smooth drum roller.



Demolition: Demolition works.

FEATURE PROJECTS

WITH OVER 150 PROJECTS DELIVERED, THESE ARE A FEW OF OUR FEATURE ONES:

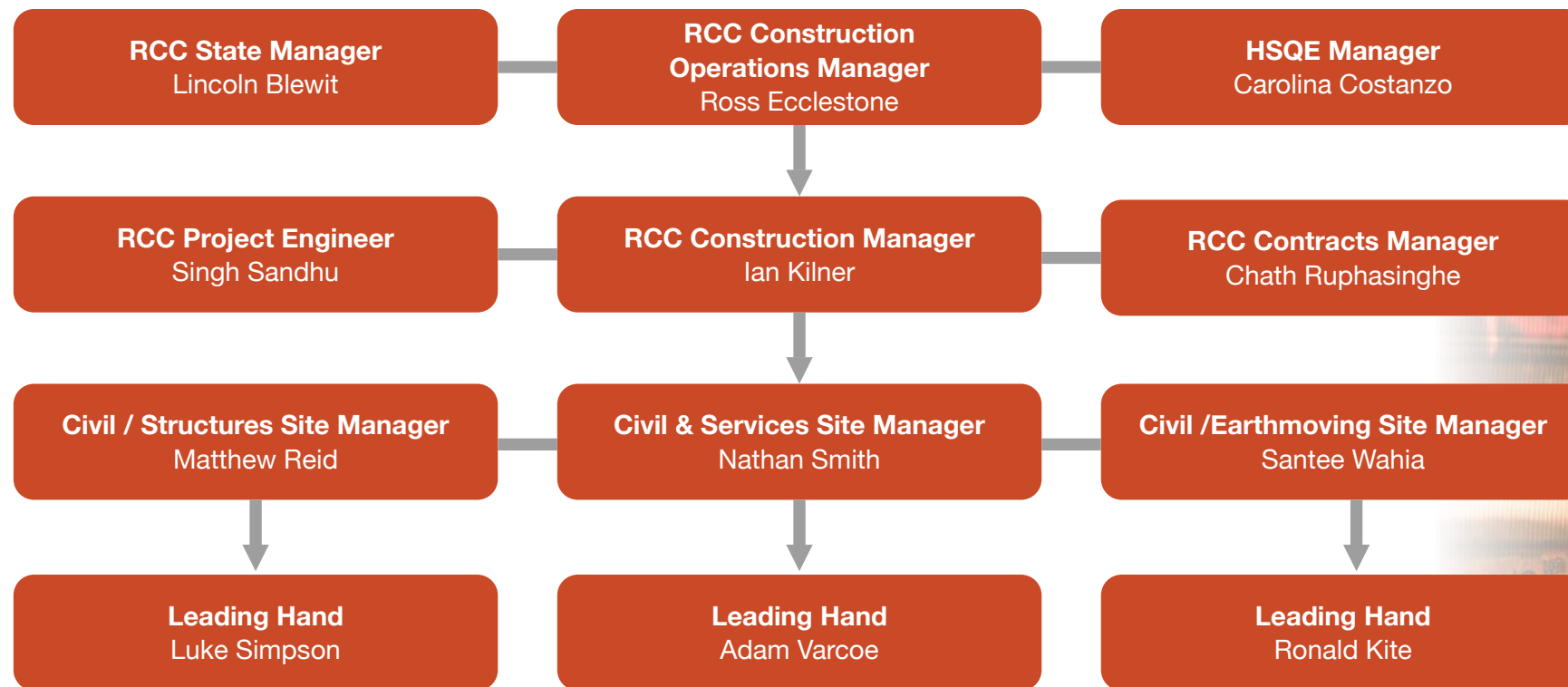
- Acciona – Majors Road Interchange Early Works & Site Establishment
- CPB – PW2PA Township Roading and Street Scape Package
- CPB – PW2PA Lochiel to Snowtown Overtaking Lane
- Lendlease Building – Glenunga International High School Redevelopment
- Fulton Hogan – Southeastern Freeway Drainage Package
- City Of Marion – Landers Road Intersection Upgrade
- Hansen Yuncken – Coopers Stadium Upgrade
- John Holland – Southern Program Maintenance Early Works
- DIT – Main South Road Civil Works Package
- City of Marion – Dover Gardens Drainage Package
- Lendlease Building – Air 555 Civil and Concrete Works Package
- Greenlight Elecnor Group – Augusta Highway Intersection Upgrade
- SA Road Services – Outback Grid Replacement Package
- Fulton Hogan – SEF Tunnels Drainage and Shoulder Package
- Axis Constructions – Land 17 Defence Civil and Concrete Package
- SA Road Services – Outback Roads and Network Maintenance and Grading
- Hansen Yuncken – NCIS-7 St Kilda Defence Works
- Widi Ngaruwa – Scallop Piling Concrete and Civil Works
- Iberdrola Australia – Bolivar Civil Landscaping Package
- SA Road Services – Kempe Road Construction and Upgrade
- Ventia – SRP RAAF Concrete Works
- Wasco – Bolivar Energy Civil Package
- McConnell Dowell – Coast Park Path Project



TEAM EXPERIENCE

Our team’s proven delivery within tier 1 + 2 project governance has been the basis in which RAW Civil Construction has provided its self performing outcomes to date.

RAW Civil Construction’s Management Structure provides South Australia over 50 years of Civil and Construction experience across Federal, State and Local Projects.



WET & DRY EQUIPMENT HIRE



**2020 CAT 311F
EXCAVATOR**



**2 x 310E HAUL TRUCKS
1 x 872 GP GRADER
2 x 2021 ISUZU 9T TIPPERS**



**2021 XCMG
12.5T PAD FOOT**



**2021 XCMG 12.5T
SMOOTH DRUM**



**2022 SANY 1.8T
EXCAVATOR
WITH TRAILER**



**2022 SANY 15.7
EXCAVATOR WITH
TILT HITCH**



**XCMG 8T EXCAVATOR
WITH TILT HITCH AND
RUBBER TRACKS**



**2022 SANY 36T
EXCAVATOR 4300KG SWL
TILT HITCH**



**2018 ISUZU FYJ-9000L MEGA
VAC UNIT TRUCK BASE DOT**



**2008 HINO TANDEM AND
10,000L WATERCART**



**2013 ISUZU FFR600
TIPPER**



**2 x 2021 ISUZU
9T TIPPER**



**2020 CAT 308
EXCAVATOR**



**2021 KUBOTA U48
EXCAVATOR WITH
TILT HITCH**



**2021 KUBOTA U35
EXCAVATOR WITH AUGERS**



**2021 KOBELCO 5T
EXCAVATOR WITH AUGER**

WORKING PARTNERS

BUSINESS



WORKING PARTNERS

LOCAL, STATE & COMMONWEALTH GOVERNMENTS



COMMUNITY INVESTMENT



KAURNA NETBALL



KAURNA FOOTBALL



NARUNGA FOOTBALL



COMMUNITY INVESTMENT

OAKDEN NETBALL CLUB



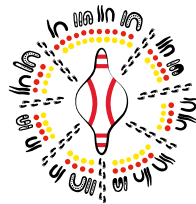
KILBURN FOOTBALL CLUB





Allan Jones
Managing Director
0414 210 526
allan@raw-group.com.au

RAWCIVILCONSTRUCTION.COM.AU



Endeavour House, Module 3.1, 11-15 Fourth Avenue, Mawson Lakes SA 5095